



Bioenergy and Food Security

Supporting Public and Private Sector Capacities in Sustainable Bioenergy Investments

FAO EBRD Collaboration Agreement

BEFS OLT (agricultural residues)



Overview

Project “Supporting Public and Private Sector Capacities in Sustainable Bioenergy Investments”

- developed under the collaboration agreement between FAO and the European Bank for Reconstruction and Development (EBRD)
- Using the **BEFS Approach** of FAO and its components

Aim of the project

- supporting decision-making related to bioenergy investment in EBRD’s countries of operation (Turkey, Egypt, Ukraine)
 - **Focus is on bioenergy from agricultural residues**
 - Implementation period: October 2014 to August 2016

Three core elements of the project

- country level analysis (Turkey, Egypt)
- **development of BEFS OLT (agricultural residues)**
- capacity building (BEFS RA and BEFS OLT agricultural residues)

BEFS OLT (agricultural residues)

Bioenergy and Food Security Operator Level Tool



BEFS

Funding

Partners

Timeframe

Capacity
building

European Bank for Reconstruction and
Development (EBRD)



Energy Institute Hrvoje Pozar



Timelines	Main activities
March - August 2015	First draft of the Tool
September 2015 – February 2016	Feedback, country specific thresholds & testing; Manual draft
March – June 2016	Finalization of the pilot tool and trainings
June – August 2016	Finalization of the Tool and the Manual

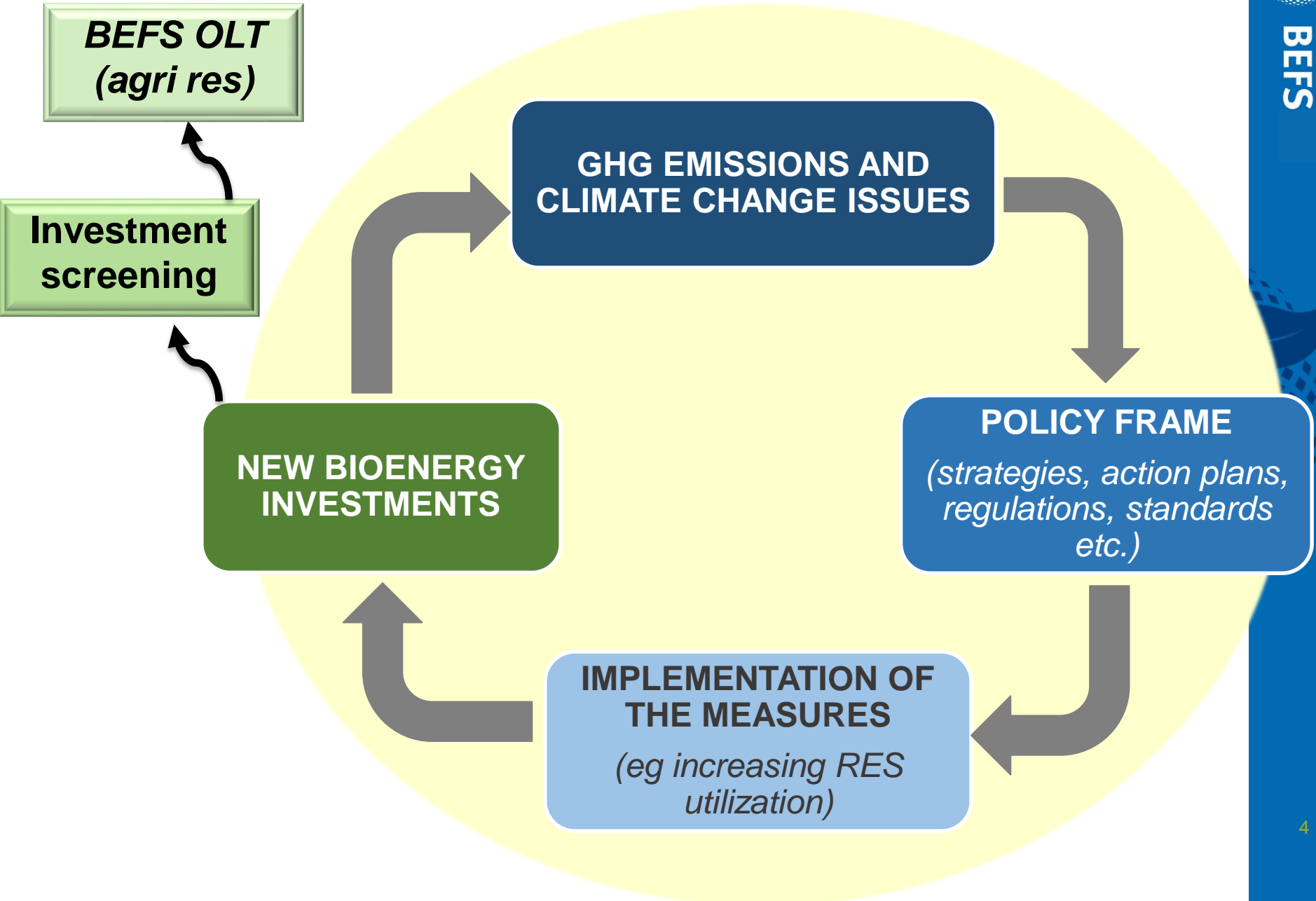


Training in Turkey – May 2016 ✓
Trainings in Ukraine – June and July 2016
Training in Egypt – July 2016

Linkage



BEFS



BEFS OLT (agricultural residues)

Bioenergy and Food Security Operator Level Tool



BEFS

Purpose

initial screening of specific bioenergy projects
(investment screening)



Aim

to assess the projects' **environmental and socio-economic performance**



Project type

utilization of **crop and/or livestock residues** for
energy production (biogas, CHP, pellet/briquette)



Users

various groups (private investors, financial
institutions, public institutions, farmers and
farmer associations, NGOs, all other bioenergy
market players)

BEFS OLT (agricultural residues)



BEFS

- **main document** for tool development:

EBRD Environmental and Social Policy 2014

- PR 1: Assessment and Management of Environmental and Social Impacts and Issues*
- PR 2: Labour and Working Conditions*
- PR 3: Resource Efficiency and Pollution Prevention and Control*
- PR 4: Health and Safety*
- PR 5: Land Acquisition, Involuntary Resettlement and Economic Displacement*
- PR 6: Biodiversity Conservation and Sustainable Management of Living Natural Resources*
- PR 7: Indigenous Peoples*
- PR 8: Cultural Heritage*
- PR 9: Financial Intermediaries*
- PR 10: Information Disclosure and Stakeholder Engagement*

- the policy embeds international standards

<http://www.ebrd.com/news/publications/policies/environmental-and-social-policy-esp.html>

BEFS OLT (agricultural residues)



- development **in close cooperation with the EBRD team**
 - *selection of value chains (feedstock, energy production etc.)*
 - *each value chain component to be treated as a stand-alone project*
 - *initial questions and indicators, scoring system, reporting...*

- the tool covers:

Ex-ante



Post-ante



- does **not replace** other institutions' standardized or legally required procedures
- **tool's application is not country-specific** (not only for Turkey, Ukraine, Egypt) – general initial screening of bioenergy projects, further steps to capture site and project specific conditions should follow

BEFS OLT (agricultural residues)



BEFS

Next steps:

- dedicated training in Egypt
- finalization of the Tool
- finalization of the Manual
- the Tool will be publicly available on FAO's website



BEFS

Bioenergy and Food Security

Thank You

